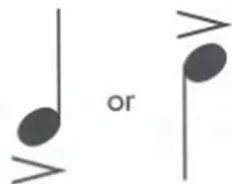


accent mark



means accent the note by playing it more loudly.



Tips from Mr. Beethoven:

1. Circle three **accent marks** in the music.
Are the accent marks on beat 1, 2, or 3?
2. Tap and count 1-2-3 with your teacher.
3. Now play. Notice the *f* and *p* signs.



Ludwig's Accents*

Ludwig van Beethoven
arranged

Cheerfully 1 on ___?

f Mis - ter Bee - tho - ven's com - pos - ing a tune, (2 - 3)
Now he's re - peat - ing his fine mel - o - dy. (2 - 3)

4 on ___? 2



Teacher Duet: (Student plays 1 octave higher.)

R.H. 1 2 5 1 4 3 4 2 1 5 3 1 2 3 5 4

L.H. *mp* 4 3 5 4

pp

*from Op. 70, No.2 (from Trio in E-flat Major)

5

4

p Scrib - bling and he writ - ing the notes in his room. (2 - 3)
How will he end it, let's lis - ten and see! (2 - 3)

4 2

Repeat from the beginning.

9

5 2 1

f Bee - tho - ven's ac - cents are loud (rest, rest) loud (rest, rest) loud!

4 2



DISCOVERY Name each L.H. note aloud. Remember the bass clef hint from Book B:
"A is the top line, step DOWN to G", or "A is the top line, step UP to B."

9

mf *f*